

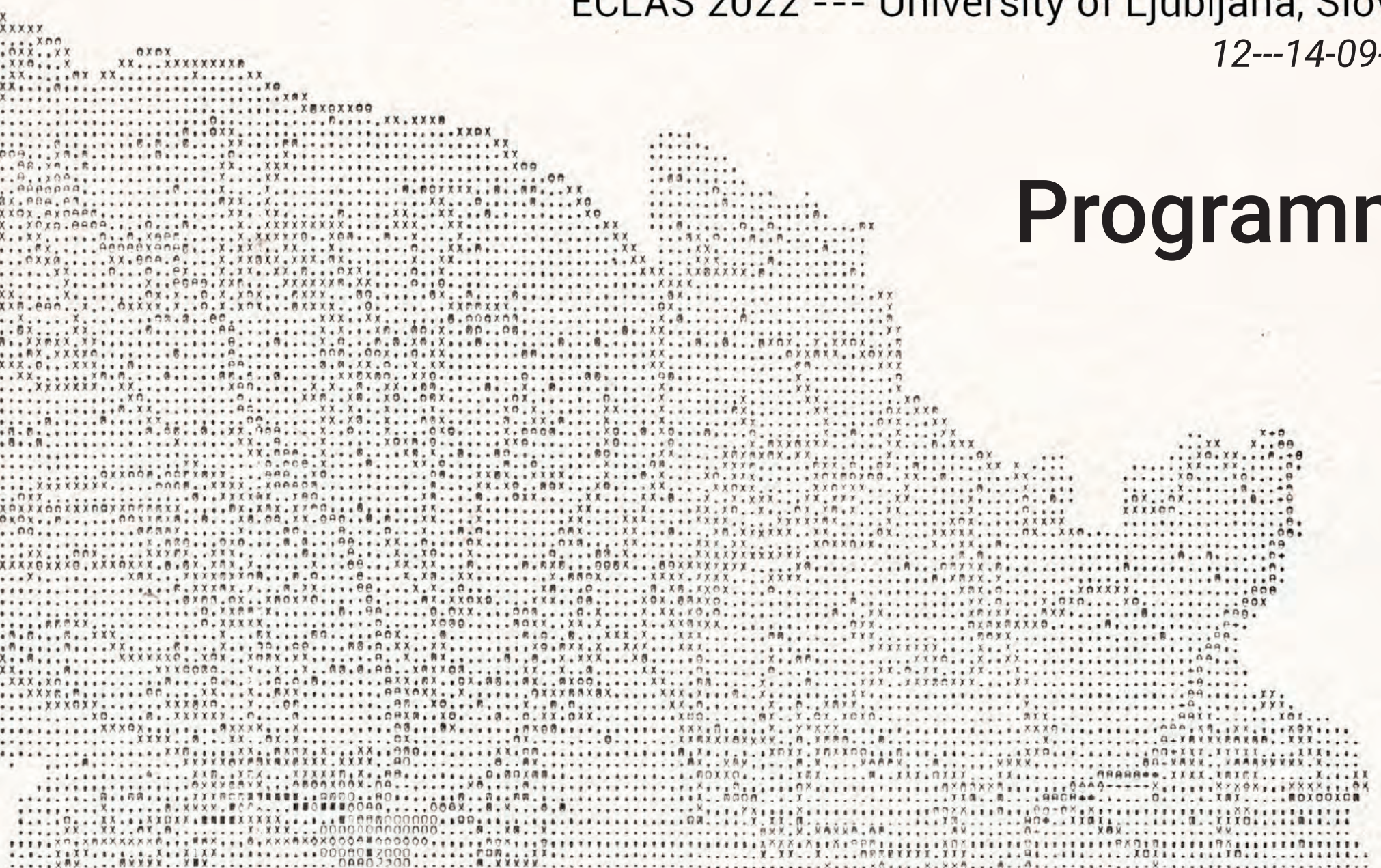


Scales of Change

ECLAS 2022 --- University of Ljubljana, Slovenia

12---14-09-2022

Programme



Sunday, 11-09-2022

DAY 1 - Venue: Department of landscape architecture

- 14.30 - 14.40 **Welcome to doctoral colloquium Research through design:** Ana Kučan (head of the Department of landscape architecture), room KA-4
- 14.40 - 15.00 **Mentor's introductory presentation:** José Miguel Lameiras: RTD methods: an approach
- 15.00 - 16.20 **PhD students' presentations**
- 16.20 - 17.00 Coffee & sandwich / **ECLAS Executive Committee (room P-2)**
- 17.00 - 18:00 **PhD students' presentations / ECLAS Executive Committee (room P-2)**
- 18:00 - 18.20 Discussion

Monday, 12-09-2022

DAY 2 - Venue: Main building

- 08.30 - 08.45 Registration & coffee
- 09.15 - 09.45 **Welcome speeches:** Nataša Poklar Ulrih (dean of the Biotechnical faculty), Ana Kučan (head of the Department of landscape architecture) and Ellen Fetzer (ECLAS president) (room D-1)
- 09.45 - 10.15 **Keynote 1:** Lučka Kajfež Bogataj: Landscape architecture role in climate change mitigation
- 10.15 - 10.45 **Keynote 2:** Carl Steinitz: Size, Scale, Time and Complexity matter
- 10.45 - 11.15 Coffee break
- 11.15 - 13.00 **Track 1 (room Ž-2 + online) / Track 2 (Ž-4) / Track 3 (Ž-3) / Track 5 (D-1 + online)**
- 13.00 - 14.00 Lunch break
- 14.00 - 15.45 **Track 2 (Ž-4) / Track 3 (online) / Track 4 (D-22) / Track 5 (D-1 + online)**
- 15.45 - 16.15 Coffee break
- 16.15 - 18.00 **Track 1 (room Ž-2) / Track 3 (Ž-3 + online) / Track 5 (D-1 + online) / Research through design workshop** (venue: departm. of LA, room KA-4)
- 19.00 - 21.00 Welcome event at Ljubljana Municipality (City centre, Mestni trg 1, Ljubljana)

Tuesday, 13-09-2022

DAY 3 - Venue: Main building

- 08.30 - 08.45 Registration & coffee
- 09.15 - 09.45 **Keynote 3:** Martin Prominski: Research through design in landscape architecture. A personal review and an optimistic outlook.
- 09.45 - 11.15 **Poster session & coffee on-site and online / SPOOL journal seminar (D-22) / JoLA socializing (Ž-3)**
- 11.15 - 13.00 **Track 1 (room Ž-2 + online) / Track 2 (online) / Track 3 (Ž-3) / Track 4 (D-22) / Head of Schools** (venue: departm. of LA, room KA-4)
- 13.00 - 14.00 Lunch break
- 14.00 - 15.30 **Round table: The Next 50 Years (room D-1)**
Mojca Golobič (moderator) with panelists: Lučka Kajfež Bogataj, Carl Steinitz, Martin Prominski, Richard Stiles, Henrik Shultz, Udo Weilacher, Jeroen de Vries, Tijana Dabović
- 15.30 - 15.45 **ECLAS Lifetime Achievement Award (room D-1)**
- 15.45 - 16.15 Coffee break
- 16.15 - 18.00 General Assembly (room D-1) / Landscape Architecture Europe book launch (Ž-2) / Network of European Landscape Architecture Archives workshop (Ž-3)
- 19.00 - 22.00 Conference Dinner & ECLAS Awards (Hotel Lev, Vošnjakova ulica 1, Ljubljana)

Wednesday, 14-09-2022

DAY 4 - Excursions

- Karst and Adriatic Coast
- 08.30 - 18.00 Option 1: Škocjan cave
- 08.30 - 18.00 Option 2: Lipica stud farm
- 11.00 - 13.00 Option 3: Ljubljana City Tour - group A
- 13.00 - 15.00 Option 4: Ljubljana City Tour - group B

DAY 1: Doctoral Colloquium

Sunday, 11. September 2022

Venue: Department of landscape architecture, room KA-4

Scales of Change

ECLAS 2022 --- University of Ljubljana, Slovenia

12---14-09-2022

Research through design

- 14.30 - 14.40 **Welcome to doctoral colloquium Research through design:** Ana Kučan (head of the Department of landscape architecture)
- 14.40 - 15.00 **Mentor's introductory presentation:** José Miguel Lameiras: RTD methods: an approach
- 15.00 - 16.20 **Heba Burqan:** Investigating co-design as a process for community learning and development in the Palestinian context
- 15:20 - 15:40 **Suzanne Katz:** Landscapes of Migration : a retro-prospective atlas for the Willamette Valley
- 15:40 - 16:00 **Lotte Dijkstra:** Intersectional Belonging: Exploring Equitable Access to Urban Forest Qualities Across Communities
- 16:00 - 16:20 **Ilze Janpavle:** Active leisure areas in the urban environment in the 21st century
- 16:20 - 17:00 Coffee & sandwich
- 17:00 - 17:20 **Laura Schöngart:** Spatial configurations of green urban stewardship. Introducing informal spatial strategies into landscape architecture
- 17:20 - 17:40 **Mikel Alberdi:** Contribution to the adaptive design of green infrastructure systems: application in San Sebastian
- 17:40 - 18:00 **Merel Enserink:** Solar energy enriching the landscape: Assessing landscape and acceptance of solar landscapes
- 18:00 - 18:20 Round-up discussion

TRACK 1: Evolution and reflection (room Ž-2)

11.15 - 11.30	Introduction by Richard Stiles: Evolution and reflection – Back in Ljubljana, but where are we now?
11.30 - 11.45	ID 68 Samaneh Nickayin: From (Mega) Regionalism Towards Planetary Scale in Landscape Architecture
11.45 - 12.00	ID 151 Gabriella Szaszak: The Place of Universal Open Space Design within the Contemporary Paradigms of Landscape Architecture
12.00 - 12.15	ID 168 Mattias Qviström: Reassembling a leiscapescape for all by learning from 50 years of landscape planning
12.15 - 12.30	ID 72 Koenraad Danneels: Designing “a spectacular, green and social valley”: post-war urbanism, landscape expertise and civil resistance in Brussels (1965-1979)
12.30 - 12.45	Discussion
13.00 - 14.00	Lunch break
16.15 - 16.30	ID 37 Juanjo Galan Vivas: Landscape change: A socio-evolutionary approach to landscape dynamics
16.30 - 16.45	ID 41 Krisztina Szabó: Renewal of large-scaled living heritage in the fast-changing landscape Subtitle: New approaches for regeneration of an outstanding Baroque living heritage
16.45 - 17.00	ID 187 Clàudia Fernandes: Planting Design: Current Practices and Research Trends
17.00 - 17.15	ID 48 Björn Bracke: Towards a multispecies urbanism. Revealing the urban patterns of sparrows in Brussels.
17.15 - 17.30	ID 45 Rainer Sachse: The revival of pocket parks
17.30 - 17.45	Discussion

TRACK 1: Evolution and reflection (ONLINE)

11.15 - 11.30	ID 61 Laura Cipriani: The Landscape Architect. Statements on landscape architecture education worldwide ID 158 Demirel: Re-Visiting the Contemporary Landscape Architecture Theory: Actors, Discourses and Practices
11.30 - 11.45	ID 158 Çisem Demirel: Re-Visiting the Contemporary Landscape Architecture Theory: Actors, Discourses and Practices
11.45 - 12.00	ID 85 Jenny Elliot: How can landscape architects, planners and other built environment practitioners best address global scale challenges
12.00 - 12.15	ID 155 Rita Occhiuto: Landscape Architects Knew...Planning with the aim of “gardening the world”.
12.15 - 12.30	ID 124 Yael Sofer: Evolution and Reflection: Landscape Architecture as a Key Player in Historic Urban Landscape Planning 1930-2022
12.30 - 12.45	Discussion
12:45 - 14.00	Lunch break

TRACK 2: Relation between design and planning (room Ž-4)

- 11.15 - 11.30 **Introduction by Henrik Shultz:** Transformative Resilience - a chance to reunite landscape planning and design?
- 11.30 - 11.45 **ID 15 Saskia de Wit:** The importance of giving form; novel relations between form and use
- 11.45 - 12.00 **ID 46 Marc Treib:** The Sparrow and the Elephant (The Garden and the Territory)
- 12.00 - 12.15 **ID 21 Merel Enserink:** Scale matters186. Attila Tóth. Green Infrastructure as a Cross-Scale Strategy at the Interface between Planning and Design
- 12.15 - 12.30 **ID 186 Attila Tóth:** Green Infrastructure as a Cross-Scale Strategy at the Interface between Planning and Design
- 12.30 - 12.45 Discussion
- 13.00 - 13.15 Lunch break
-
- 14.00 - 14.15 **ID 112 Richard Stiles:** Urban landscapes: between planning and design
- 14.15 - 14.30 **ID 40 Yuxian Chen:** Case Study of Urban Public Open Spaces at Multi-scales from the Perspective of New Cultural Infrastructure: A Research in Shanghai
- 14.30 - 14.45 **ID 20 Manuela Ronci:** Multiscale approach to biodiversity conservation: Chicago as a case study
- 14.45 - 15.00 **ID 5 Daniel Münderlein:** Spatial images as planning tool for bridging scale levels in multifunctional urban landscapes
- 15.00 - 15.15 **ID 188 Katalin Takács:** Heritage value-based approaches as a means of planning and designing across scales
- 15.15 - 15.30 Discussion
- 15.30 - 15.45 Coffee break

TRACK 3: Teaching across scales (room Ž-3)

11.15 - 11.30	Introduction by Udo Weilacher: Teaching across Scales – Learning from Research
11.30 - 11.45	ID 83 Amber Roberts: From Courtyards to Coastlines: The Diversity of Scale and Breadth of Impact of Ian McHarg in Scotland
11.45 - 12.00	ID 77 Helena Mellqvist: Benefits regarding collaboration across subject, department and university boundaries – the master program Sustainable Urban Development as example
12.00 - 12.15	ID 203 Dawn Parke: Systems thinking and transdisciplinary practice in Landscape Architecture Education. Case studies from Birmingham School of Architecture and Design
12.15 - 12.30	ID 92 Tomaž Pipan: Multi-scale drawings. From virtual into the real
12.30 - 12.45	Discussion
13.00 - 13.15	Lunch break
16.15 - 16.30	ID 60 Roland Wüick: Student design competitions for large scale projects
16.30 - 16.45	ID 109 Kristine Vugule: Using ArcGIS Story Maps in a first year Landscape planning projects
16.45 - 17.00	ID 93 Tadej Bevk: Global, local, and everything in between: understanding drivers of change through scenario design
17.00 - 17.15	ID 102 Luca Maria Francesco Fabris: Teaching on Large Parks: Changes in Scale and Conception
17.15 - 17.30	ID 54 Ellen Fetzer: Community Scales. Toward a socially transformative pedagogy in design and planning. A critical reflection
17.30 - 17.45	Discussion

TRACK 4: Context matters (room D-22)

14.00 - 14.15	Introduction by Jeroen de Vries: Context matters
14.15 - 14.30	ID 52 Diedrich Bruns: Expanding Horizons on historical political context, international networks and the role of sustainability in landscape architecture. - Findings from "Routledge Handbook of Landscape Architecture Education"
14.30 - 14.45	ID 202 Nevena Vasiljević: Landscape character: Common good across scales
14.45 - 15.00	Discussion

TRACK 3: Teaching across scales (ONLINE)

14.00 - 14.15	ID 47 Chandrani Chakrabarti: Scaling Up, Scaling Deep: Negotiating scales for productive urban landscapes
14.15 - 14.30	ID 79 Maria Stella Lux: From Landscape to Interior: a design studio experience in Monesteroli, Italy
14.30 - 14.45	ID 96 Kamni Gill: Making molehills and mountains: Teaching soils, topography and construction
14.45 - 15.00	ID 86 Angelica Stan: The liquid nature of the landscape. From metaphor to a method of teaching
15.00 - 15.15	ID 126 Stefan Darlan Boris: Teaching time - working across scales in the Aarhus River Valley
15.15 - 15.30	ID 73 Agnès Patuano: Research through design for health and wellbeing
15.30 - 15.45	Discussion
15.45 - 16.15	Coffee break
16.15 - 16.30	ID 163 Zita Szabó: Uncertainty of scales. The scale of uncertainty. In a trace of the flow
16.30 - 16.45	ID 87 Ingrid Merete Ødegård: Teaching in one-to-one scale in the Norwegian Landscape Laboratory NMBU
16.45 - 17.00	ID 91 Gianni Lobosco: 4x1: 4 km ² over 1 century
17.00 - 17.15	ID 130 Swati Sahasrabudhe: Merging landscapes scales: A journey through pedagogical approaches in Landscape Architecture Studios
17.15 - 17.30	ID 12 Andrea Oldani: Abjuring Scales
17.30 - 17.45	ID 181 Jorg Sieweke: The generalist becomes the specialist of the Anthropocene!
17.45 - 18.00	Discussion

TRACK 5: Beyond the field (room D-1)

14.00 - 14.15	Introduction by Tijana Dabović: Beyond the field seen by a learning spatial
14.15 - 14.30	ID 150 Tim Waterman: Planetarity: Landscapes of Double Consciousness
14.30 - 14.45	ID 29 Chrili Car: Scales of West African Dimensions
14.45 - 15.00	ID 122 Ines Prehn: En Route: a new understanding of being physically and virtually on the move
15.00 - 15.15	ID 34 Inge Bobbink: Courage to leave gaps in landscape architecture education
15.15 - 15.30	ID 82 Ranja Hautamäki: Transdisciplinary knowledge production: From ideal to driving force
15.30 - 15.45	Discussion
15.45 - 16.15	Coffee break
16.15 - 16.30	ID 27 Michiel Bakx: A spatial quality framework to discuss design interventions for agricultural landscapes
16.30 - 16.45	ID 133 Amalia Engström: Recreational landscapes in the compact city: a challenge for landscape planning
16.45 - 17.00	ID 156 Karin Helms: NATURACT, a multi-disciplinary research project examining anticipatory projects through nature-based solutions in risk landscapes.
17.00 - 17.15	ID 135 Nadezhda Kerimova: Visual processing of green zones in shared courtyards: a cognitive approach
17.15 - 17.30	ID 138 Anaïs Leger-Smith: The bird-friendly city : Interdisciplinary design research examining residential landscape typo-morphologies favorable to housing avifauna in the city of Toulouse, France.
17.30 - 17.45	Discussion

TRACK 5: Beyond the field (ONLINE)

11.15 - 11.30	ID 171 Ekin Seker Kaya: Participations of Different Disciplines- Examining the Development Process of Landscape Architecture through Academic Publications
11.30 - 11.45	ID 161 Josephine Norrbo: Means and ends of abstraction in landscape architectural practice - Shredding light on a blind spot
11.45 - 12.00	ID 26 Elizabeth Stapleton: MicroLandscapes: Lessons in multi-scalar green infrastructure design from the discipline of microbial ecology
12.00 - 12.15	ID 32 Efrat Hildesheim: On the Borderroadscape and the Landscape Syncope: Conceptualization, Scale and Interdisciplinarity
12.15 - 12.30	ID 185 Maria Pina Usai: DECODING COASTAL PARADOX. The trans-disciplinary approach as a research method for an ever-changing landscape
12.30 - 12.45	Discussion
12.45 - 14.00	Lunch break
14.00 - 14.15	ID 157 Zita Szabó: Defining energy transition in landscape architecture
14.15 - 14.30	ID 119 Funda Bas Bütüner: (E)Merging Scales: On Landscape in Architectural Education
14.30 - 14.45	ID 90 Emir Hasanagić: Transdisciplinarity in landscape architecture profession and education in Bosnia and Herzegovina
14.45 - 15.00	ID 201 Gabriëlle Bartelse: Future proof teaching: lifelong learning in the Mixed Classroom
15.00 - 15.15	ID 63 Werner Rolf: Transformation pathways towards sustainable urban development by the inclusion of peri-urban farmland in green infrastructure strategies
15.15 - 15.30	ID 31 Rosalea Monacella: Power Energy: The Thickened Ground of Labour
15.30 - 15.45	Discussion
15.45 - 16.15	Coffee break
16.15 - 16.30	ID 118 Divya Shah: Reciprocal landscapes: Imaging and imagining indigenous landscapes of India
16.30 - 16.45	ID 95 Mina Di Marino: CLaD and Transdisciplinarity. Transdisciplinary challenges, research and education in Landscape democracy
16.45 - 17.00	ID 105 Monica Manfredi: The Biopark: a sequence of temporary landscapes active in a progressive decontamination of the soil
17.00 - 17.15	ID 39 Alyssa Schwann: Land and Well-Being: Learning from the Canadian Arctic
17.15 - 17.30	ID 16 Saja Al-Rifaie: Humanitarian Scale in Landscape Architecture
17.30 - 17.45	Discussion

DAY 3: Conference programme

Tuesday, 13. September 2022

Venue: Main Building

Scales of Change

ECLAS 2022 --- University of Ljubljana, Slovenia

12---14-09-2022

TRACK 1: Evolution and reflection (room Ž-2)

- 11.15 - 11.30 **ID 116 Amalia Engström:** Reassembling a welfare landscape: applying learnings from planning outdoor recreation in the 70s to today's Sweden
- 11.30 - 11.45 **ID 205 Vita Žlender:** Investigating the association between characteristics of green space and physical activity of young people in Slovenia
- 11.45 - 12.00 **ID 195 Cláudia Fernandes:** Assessing the Perceptions, Preferences, and Attitudes of Users of Urban Green Spaces
- 12.00 - 12.15 **ID 64 Patrícia Szabó:** Lost in translation - How do „noises” in the landscape architectural communication of public green space projects affect the implementation of the principles of sustainability?
- 12.15 - 12.30 Discussion
- 13.00 - 14.00 Lunch break

TRACK 3: Teaching across scales (room Ž-3)

- 11.15 - 11.30 **ID 132 Elisabeth Sjö Dahl:** Interconnecting scales through the flows of water
- 11.30 - 11.45 **ID 207 Martin van den Toorn:** Teaching in landscape architecture; learning to design in the context of the dynamics of landscape form and process
- 11.45 - 12.00 **ID 42 Zydi Teqja:** Blue-Green Factor (BGF) as a tool for cross-scale Teaching Methods in Landscape Architecture
- 12.00 - 12.15 **ID 172 Matanya Sack:** “Land-Based”: Issue-based teaching of landscape territorial design, as a bridge between planning and design at multiple scales - the case of LandBasics “River-Sea” programme
- 12.15 - 12.30 Discussion
- 13.00 - 14.00 Lunch break

TRACK 4: Context matters (room D-22)

- 11.15 - 11.30 **ID 83 Karin Helms:** The European Master in Landscape Architecture: Examining pedagogical approaches on European dimension in large-scale landscape design.
- 11.30 - 11.45 **ID 67 Richard Stiles:** Not just ‘green...’ and ‘blue...’, it is time to focus on: Invisible Infrastructure
- 11.45 - 12.00 **ID 142 Jeroen de Vries:** Connecting national and international scales of landscape architecture standards: a draft proposal for a common training framework
- 12.00 - 12.15 Discussion
- 13.00 - 14.00 Lunch break

TRACK 1: Evolution and reflection (ONLINE)

- 11.15 - 11.30 **ID 165 Fatma Bekar:** Revealing History for the Landscapes of Today and Future
- 11.30 - 11.45 **ID 141 David Escudero:** Heritage Practices and Contemporary Landscapes: Reflections after 20 years of the European Landscape Convention
- 11.45 - 12.00 **ID 103 Catarina Teixeira:** Novel solutions to Novel challenges: How can Landscape Architecture bridge gaps between science, people, and nature?
- 12.00 - 12.15 **ID 164 Märit Jansson:** The welfare landscape and densification – where do children play?
- 12.15 - 12.30 **ID 120 Joseph Adeniran Adedeji:** Centennial Landscape Architecture Education in Africa: Scale, Success, Setback
- 12.30 - 12.45 Discussion
- 13.00 - 14.00 Lunch break

TRACK 2: Relation between design and planning (ONLINE)

- 11.15 - 11.30 **ID 14 Bin Li:** A Landscape-informed Approach to Bridging Landscape Planning and Design
- 11.30 - 11.45 **ID 196 Hannah Hopewell:** What, where, how much and how: Landscape-led responses to housing in crisis
- 11.45 - 12.00 **ID 35 Firat Ali Firat:** A Location Evaluation Approach for New Green Bridges in Brisbane, Australia: Hybrid Decision Making with GIS and Space Syntax
- 12.00 - 12.15 **ID 50 Elif Ayan Çeveni:** Scale examination of the smellscape on where ? to how ?
- 12.15 - 12.30 **ID 148 Caroline Dahl:** Design as a driving force for planning uncertain futures
- 12.30 - 12.45 Discussion
- 13.00 - 14.00 Lunch break

DAY 4: Excursions

Wednesday, 14. September 2022

Karst and Adriatic Coast

09:00 - 18:00 **Option 1: ŠKOCJANSKE JAME CAVES**

Škocjanske jame caves are the only monument in Slovenia and the Classical Karst region on UNESCO's list of natural and cultural world heritage sites. The exceptional volume of the underground canyon distinguishes the Škocjan Caves from other caves and places them among the most famous underground features in the world.



Photo: Borut Lozej

After option 1 and 2, the trip will continue to the Sečovlje Saltpans Natural Park, where the ancient method of manual salt-making is still practiced. According to the available written records, the Sečovlje salt-pans are more than 700 years old, and represents an exceptional cultural landscape with many indigenous and endangered plant and animal species. Our last stop of the day before returning to Ljubljana in the evening will be a local wine tasting in a traditional wine cellar.

Ljubljana

11.00 - 13.00 **Option 3: LJUBLJANA CITY TOUR - group A**

13:00 - 15:00 **Option 4: LJUBLJANA CITY TOUR - group B**

A two hour tour of Ljubljana City. The tour will take delegates through the historical city centre, whose unique architecture is the legacy of the Baroque and Art Nouveau periods and, most notably, the work of the famous 20th-century architect Jože Plečnik; whose work is now listed on the UNESCO World Heritage list. From the city centre we will go to Ljubljana Castle which has sat on a hill overlooking the city for about 900 years. On this tour, delegates will learn about the city's and castle's history and enjoy the beautiful city views afforded from the castle's ramparts.

09:00 - 18:00 **Option 2: LIPICA STUD FARM**

Lipica Stud farm is the original stud farm of one of the oldest cultural horse breeds – the Lipizzan horse – and the oldest European stud farm breeding a single breed of horse. It is the only micro location offering optimum conditions for Lipizzan horse breeding at the highest level, and its individual elements (the layout, architectural core, and cultural landscape) were developed exclusively for the purpose of Lipizzan horses breeding.



Photo: Borut Lozej



Photo: Barbara Kostanjšek

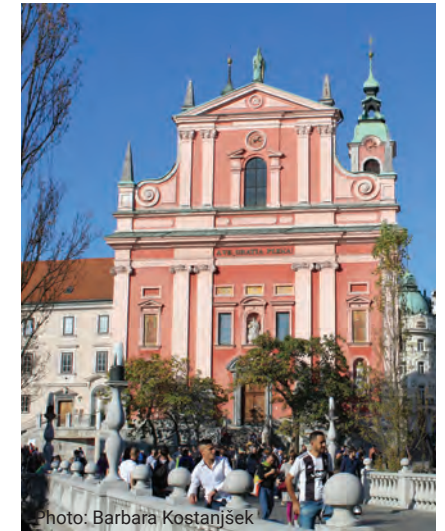


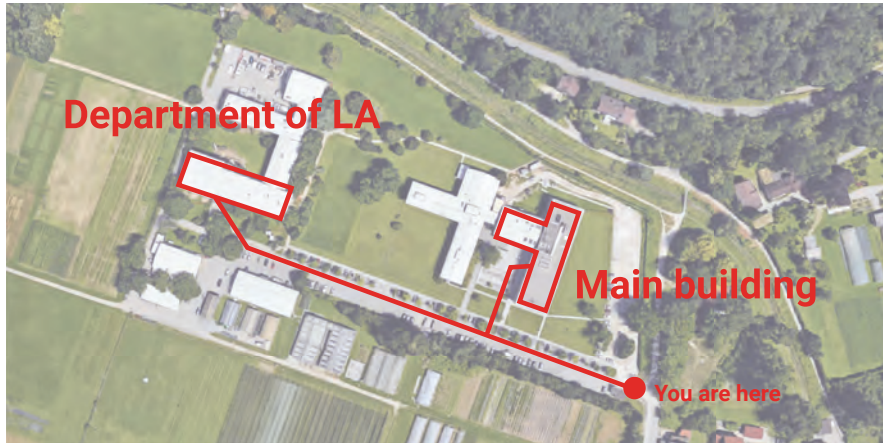
Photo: Barbara Kostanjšek

Conference

University of Ljubljana, Biotechnical faculty - Conference

Jamninarjeva 101, 1000 Ljubljana

Conference will be held in the buildings, visible on the map of faculty campus.



Main building of the Biotechnical faculty (ground and 1st floor of the building):

- Registration, poster sessions, coffee & lunch breaks (entrance of the building)
- Track 1, LAE book launch (room Ž-2)
- Track 2 (room Ž-4)
- Track 3, NELA workshop, JoLA socializing (room Ž-3)
- Track 4, SPOOL journal seminar (room D-22)
- Track 5, welcome speeches, keynotes, round table, general assembly (room D-1)

Department of Landscape Architecture (on the 2nd floor of the building):

- Doctoral Colloquium, Head of Schools meeting (room KA-4)
- ExCo meeting (room P-2)
- Landscape Architecture students' exhibitions

Ljubljana Municipality – Welcome event

Mestni trg 1, 1000 Ljubljana

Hotel Lev – Gala dinner

Vošnjakova ulica 1, 1000 Ljubljana

Tourism Information Centre – City excursion

Adamič-Lundrovo nabrežje 2, 1000 Ljubljana

Getting around in Ljubljana

You can arrive to the faculty by car (free parking available, the guard will let you in), taxi, bike or bus:

- > Bus line 14: exit Station Jamninarjeva, 5 min walk
- > Bus line 18: exit Station Večna pot, 5 min walk
- > Bus line 6: exit Station Vič, 12 min walk

To use the bus or bike sharing system BicikeLJ you need to get an Urbana card.

Urbana costs 2 € and can be bought at an Urbanomat green ticket machine or in any Trafika/Kiosk/News stand. A weekly subscription for the bike system is 3 € and a single bus ride is 1.30 €. Closest BicikeLJ bike sharing stations are Viško polje (800 m) and Živalski vrt (500 m).

If you will take a taxi you can use:

Taxi Metro (App or +386 41240200) or
Cammeo (App or +386 17771212)

What to see in Ljubljana

National Gallery of Slovenia – permanent Collection of Art in Slovenia from 1870 Onwards
Museum & Galleries of Ljubljana – various permanent and limited exhibitions at different locations
International Centre of Graphic Arts – various limited exhibitions
Cankarjev dom – various limited exhibitions
Škuc Gallery – various limited exhibitions
Vodnikova domačija Šiška – various limited exhibitions
Plečnik house – permanent collection and guided tours of the Slovenian famous architect
Nebotičnik building – cafe with a panoramic view of Ljubljana from city's first skyscraper
Central city market and Žale cemetery by architect Jože Plečnik
Autonomous cultural centre Metelkova – night life and various art exhibitions
Kino Šiška – night life and various art exhibitions

Getting to the conference by bus

