

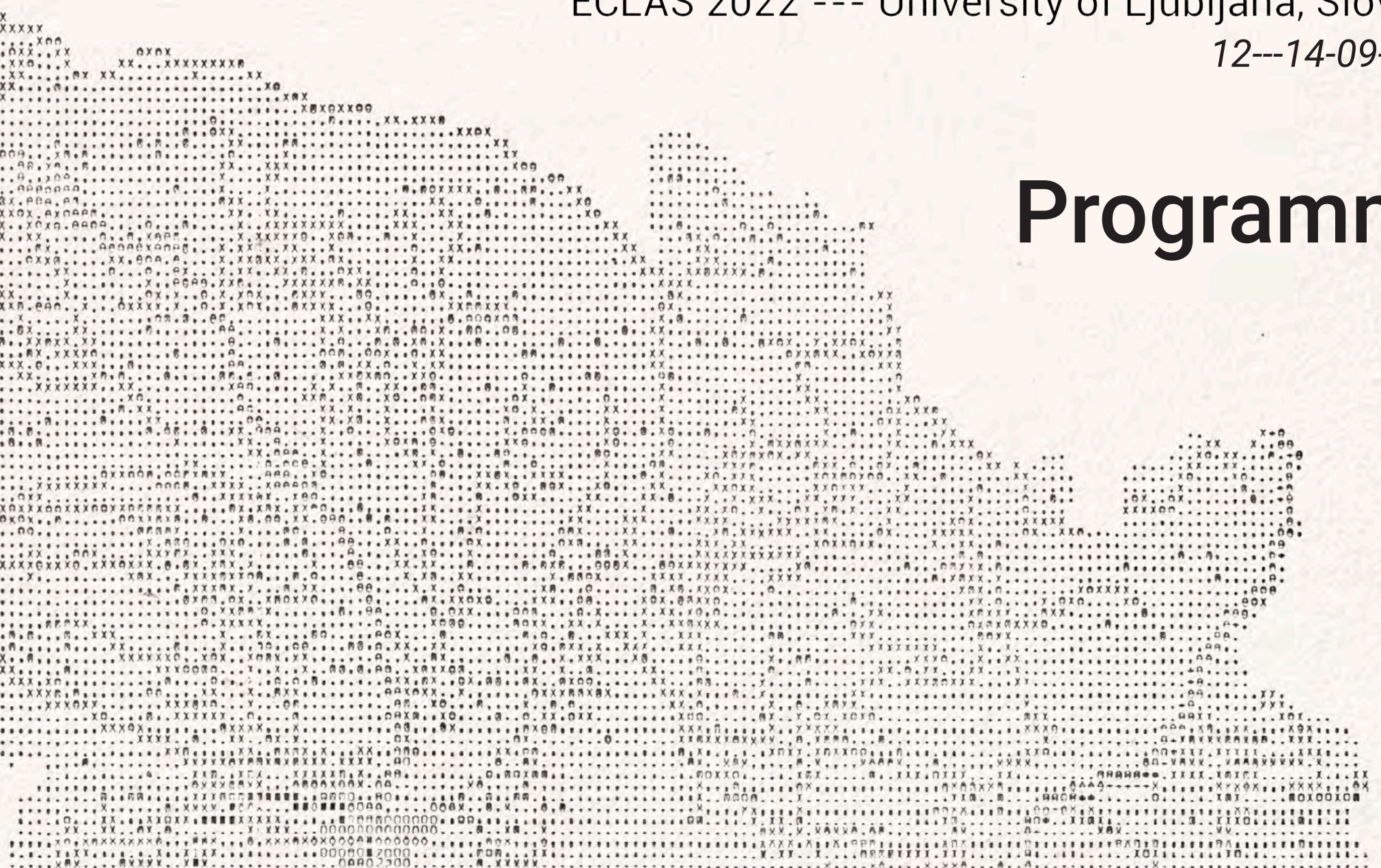


# Scales of Change

ECLAS 2022 --- University of Ljubljana, Slovenia

12---14-09-2022

## Programme



Sunday, 11-09-2022

DAY 1 - Venue: Department of landscape architecture

14.30 - 14.40	<b>Welcome to doctoral colloquium Research through design:</b> Ana Kučan (head of the Department of landscape architecture), room KA-4 + online stream
14.40 - 15.00	<b>Mentor's introductory presentation:</b> José Miguel Lameiras: RTD methods: an approach
15.00 - 16.20	<b>PhD students' presentations</b>
16.20 - 17.00	Coffee & sandwich
17.00 - 18:00	<b>PhD students' presentations / ECLAS Executive Committee</b> (room P-2)
18:00 - 18.20	Discussion

Monday, 12-09-2022

DAY 2 - Venue: Main building

08.30 - 08.45	Registration & coffee
09.15 - 09.45	<b>Welcome speeches:</b> Nataša Poklar Ulrih (dean of the Biotechnical faculty), Ana Kučan (head of the Department of landscape architecture) and Ellen Fetzer (ECLAS president) (room D-1 + online stream)
09.45 - 10.15	<b>Keynote 1:</b> Lučka Kajfež Bogataj: Landscape architecture role in climate change mitigation (room D-1 + online stream)
10.15 - 10.45	<b>Keynote 2:</b> Carl Steinitz: Size, Scale, Time and Complexity matter (room D-1 + online stream)
10.45 - 11.15	Coffee break
11.15 - 13.00	<b>T1 (room Ž-2) / T1 (online) / T2 (Ž-4) / T3 (Ž-3) / T5 (D-1) / T5 (online)</b>
13.00 - 14.00	Lunch break
14.00 - 15.45	<b>T2 (room Ž-4) / T3 (online) / T4 (D-22) / T5 (D-1) / T5 (online)</b>
15.45 - 16.15	Coffee break
16.15 - 18.00	<b>T1 (room Ž-2) / T3 (Ž-3) / T3 (online) / T5 (D-1) / T5 (online)</b> / Research through design workshop (venue: Department of landscape architecture, room KA-4)
19.00 - 21.00	Welcome event at Ljubljana Municipality (City centre, Mestni trg 1, Ljubljana)

Tuesday, 13-09-2022

DAY 3 - Venue: Main building

08.30 - 08.45	Registration & coffee
09.15 - 09.45	<b>Keynote 3:</b> Martin Prominski: Research through design in landscape architecture. A personal review and an optimistic outlook. (room D-1 + online stream)
09.45 - 11.15	<b>Poster session &amp; coffee on-site and ONLINE</b> / SPOOL journal seminar (D-22) / JoLA socializing (Ž-3) / online networking (breakout rooms) / students' exhibitions Imagining Futures and Zoom-In landscape (venue: Department of landscape architecture)
11.15 - 13.00	<b>T1 (room Ž-2) / T1 (online) / T2 (online) / T3 (Ž-3) / T4 (D-22)</b> / Head of Schools (venue: Department of landscape architecture)
13.00 - 14.00	Lunch break
14.00 - 15.30	<b>Round table: The Next 50 Years</b> (room D-1 + online stream) Mojca Golobič (moderator) with panelists: Lučka Kajfež Bogataj, Carl Stenitz, Martin Prominski, Richard Stiles, Henrik Shultz, Udo Weilacher, Jeroen de Vries, Tijana Dabović
15.30 - 15.45	<b>ECLAS Lifetime Achievement Award</b> (room D-1)
15.45 - 16.15	Coffee break
16.15 - 18.00	General Assembly (room D-1) / Landscape Architecture Europe book launch (Ž-2) / Network of European Landscape Architecture Archives workshop (Ž-3)
19.00 - 22.00	Conference Dinner & ECLAS Awards (Hotel Lev, Vošnjakova ulica 1, Ljubljana)

Wednesday, 14-09-2022

DAY 4 - Excursions

	Karst and Adriatic Coast
08.30 - 18.30	Option 1: Škocjan cave
08.30 - 18.30	Option 2: Lipica stud farm
11.00 - 13.00	Option 3: Ljubljana City Tour - group A
13.00 - 15.00	Option 4: Ljubljana City Tour - group B

# DAY 1: Doctoral Colloquium

Sunday, 11. September 2022

Venue: Department of landscape architecture, room KA-4

# Scales of Change

ECLAS 2022 --- University of Ljubljana, Slovenia

12---14-09-2022

## Research through design

- 14.30 - 14.40 **Welcome to doctoral colloquium Research through design:** Ana Kučan (head of the Department of landscape architecture)
- 14.40 - 15.00 **Mentor's introductory presentation:** José Miguel Lameiras: RTD methods: an approach
- 15.00 - 16.20 **Suzanne Katz:** Landscapes of Migration : a retro-prospective atlas for the Willamette Valley
- 15:20 - 15:40 **Lotte Dijkstra:** Intersectional Belonging: Exploring Equitable Access to Urban Forest Qualities Across Communities
- 15:40 - 16:00 **Heba Burqan:** Investigating co-design as a process for community learning and development in the Palestinian context
- 16:00 - 16:20 **Ilze Janpavle:** Active leisure areas in the urban environment in the 21st century
- 16:20 - 17:00 Coffee & sandwich
- 17:00 - 17:20 **Laura Schöngart:** Spatial configurations of green urban stewardship. Introducing informal spatial strategies into landscape architecture
- 17:20 - 17:40 **Mikel Alberdi:** Contribution to the adaptive design of green infrastructure systems: application in San Sebastian
- 17:40 - 18:00 **Merel Enserink:** Solar energy enriching the landscape: Assessing landscape and acceptance of solar landscapes
- 18:00 - 18:20 Round-up discussion



## TRACK 1: Evolution and reflection (room Ž-2)

11.15 - 11.30	<b>Introduction by Richard Stiles:</b> Evolution and reflection – Back in Ljubljana, but where are we now?
11.30 - 11.45	<b>ID 68 Samaneh Nickayin:</b> From (Mega) Regionalism Towards Planetary Scale in Landscape Architecture
11.45 - 12.00	<b>ID 151 Gabriella Szaszak:</b> The Place of Universal Open Space Design within the Contemporary Paradigms of Landscape Architecture
12.00 - 12.15	<b>ID 168 Mattias Qviström:</b> Reassembling a leiscapescape for all by learning from 50 years of landscape planning
12.15 - 12.30	<b>ID 206 Martin van der Toorn:</b> Looking back at three Ljubljana conferences; theory, practice and teaching in landscape architecture
12.30 - 12.45	Discussion
13.00 - 14.00	Lunch break

16.15 - 16.30	<b>ID 37 Juanjo Galan Vivas:</b> Landscape change: A socio-evolutionary approach to landscape dynamics
16.30 - 16.45	<b>ID 41 Krisztina Szabó:</b> Renewal of large-scaled living heritage in the fast-changing landscape Subtitle: New approaches for regeneration of an outstanding Baroque living heritage
16.45 - 17.00	<b>ID 187 Clàudia Fernandes:</b> Planting Design: Current Practices and Research Trends
17.00 - 17.15	<b>ID 48 Björn Bracke:</b> Towards a multispecies urbanism. Revealing the urban patterns of sparrows in Brussels.
17.15 - 17.30	<b>ID 45 Rainer Sachse:</b> The revival of pocket parks
17.30 - 17.45	Discussion

## TRACK 1: Evolution and reflection (ONLINE session 1)

11.15 - 11.30	<b>ID 61 Laura Cipriani &amp; Maria Villalobos:</b> The Landscape Architect. Statements on landscape architecture education worldwide
11.30 - 11.45	<b>ID 158 Çisem Demirel:</b> Re-Visiting the Contemporary Landscape Architecture Theory: Actors, Discourses and Practices
11.45 - 12.00	<b>ID 85 Jenny Elliot:</b> How can landscape architects, planners and other built environment practitioners best address global scale challenges
12.00 - 12.15	<b>ID 155 Rita Occhiuto:</b> Landscape Architects Knew...Planning with the aim of "gardening the world".
12.15 - 12.30	<b>ID 124 Yael Sofer:</b> Evolution and Reflection: Landscape Architecture as a Key Player in Historic Urban Landscape Planning 1930-2022
12.30 - 12.45	Discussion
13:00 - 14.00	Lunch break

## TRACK 2: Relation between design and planning (room Ž-4)

11.15 - 11.30	<b>Introduction by Henrik Schultz:</b> Transformative Resilience - a chance to reunite landscape planning and design?
11.30 - 11.45	<b>ID 15 Saskia de Wit:</b> The power of composition
11.45 - 12.00	<b>ID 46 Marc Treib:</b> The Sparrow and the Elephant (The Garden and the Territory)
12.00 - 12.15	<b>ID 21 Merel Enserink:</b> Scale matters
12.15 - 12.30	<b>ID 186 Attila Tóth:</b> Green Infrastructure as a Cross-Scale Strategy at the Interface between Planning and Design
12.30 - 12.45	Discussion
13.00 - 14.00	Lunch break
14.00 - 14.15	<b>ID 112 Richard Stiles:</b> Urban landscapes: between planning and design
14.15 - 14.30	<b>ID 40 Yuxian Chen:</b> Case Study of Urban Public Open Spaces at Multi-scales from the Perspective of New Cultural Infrastructure: A Research in Shanghai
14.30 - 14.45	<b>ID 20 Manuela Ronci:</b> Multiscale approach to biodiversity conservation: Chicago as a case study
14.45 - 15.00	<b>ID 5 Daniel Münderlein:</b> Spatial images as planning tool for bridging scale levels in multifunctional urban landscapes
15.00 - 15.15	<b>ID 188 Katalin Takács:</b> Heritage value-based approaches as a means of planning and designing across scales
15.15 - 15.30	Discussion
15.30 - 15.45	Coffee break

## TRACK 3: Teaching across scales (room Ž-3)

11.15 - 11.30	<b>Introduction by Udo Weilacher:</b> Teaching across Scales – Learning from Research
11.30 - 11.45	<b>ID 83 Amber Roberts:</b> From Courtyards to Coastlines: The Diversity of Scale and Breadth of Impact of Ian McHarg in Scotland
11.45 - 12.00	<b>ID 77 Helena Mellqvist:</b> Benefits regarding collaboration across subject, department and university boundaries – the master program Sustainable Urban Development as example
12.00 - 12.15	<b>ID 203 Dawn Parke:</b> Systems thinking and transdisciplinary practice in Landscape Architecture Education. Case studies from Birmingham School of Architecture and Design
12.15 - 12.30	<b>ID 92 Tomaž Pipan:</b> Multi-scale drawings. From virtual into the real
12.30 - 12.45	Discussion
13.00 - 14.00	Lunch break
16.15 - 16.30	<b>ID 60 Roland Wüick:</b> Student design competitions for large scale projects
16.30 - 16.45	<b>ID 109 Kristine Vugule:</b> Using ArcGIS Story Maps in a first year Landscape planning projects
16.45 - 17.00	<b>ID 93 Tadej Bevk:</b> Global, local, and everything in between: understanding drivers of change through scenario design
17.00 - 17.15	<b>ID 102 Luca Maria Francesco Fabris:</b> Teaching on Large Parks: Changes in Scale and Conception
17.15 - 17.30	<b>ID 54 Ellen Fetzer:</b> Community Scales. Toward a socially transformative pedagogy in design and planning. A critical reflection
17.30 - 17.45	Discussion

## TRACK 4: Context matters (room D-22)

14.00 - 14.15	<b>Introduction by Jeroen de Vries:</b> Context matters
14.15 - 14.30	<b>ID 52 Diedrich Bruns:</b> Expanding Horizons on historical political context, international networks and the role of sustainability in landscape architecture. - Findings from "Routledge Handbook of Landscape Architecture Education"
14.30 - 14.45	<b>ID 202 Nevena Vasiljević:</b> Landscape character: Common good across scales
14.45 - 15.00	Discussion

## TRACK 3: Teaching across scales (ONLINE session 1)

14.00 - 14.15	<b>ID 47 Chandrani Chakrabarti:</b> Scaling Up, Scaling Deep: Negotiating scales for productive urban landscapes
14.15 - 14.30	<b>ID 79 Maria Stella Lux:</b> From Landscape to Interior: a design studio experience in Monesteroli, Italy
14.30 - 14.45	<b>ID 96 Kamni Gill:</b> Making molehills and mountains: Teaching soils, topography and construction
14.45 - 15.00	<b>ID 86 Angelica Stan:</b> The liquid nature of the landscape. From metaphor to a method of teaching
15.00 - 15.15	<b>ID 126 Stefan Darlan Boris:</b> Teaching time - working across scales in the Aarhus River Valley
15.15 - 15.30	<b>ID 73 Agnès Patuano:</b> Research through design for health and wellbeing
15.30 - 15.45	Discussion
15.45 - 16.15	Coffee break
16.15 - 16.30	<b>ID 163 Zita Szabó:</b> Uncertainty of scales. The scale of uncertainty. In a trace of the flow
16.30 - 16.45	<b>ID 87 Ingrid Merete Ødegård:</b> Teaching in one-to-one scale in the Norwegian Landscape Laboratory NMBU
16.45 - 17.00	<b>ID 91 Gianni Lobosco:</b> 4x1: 4 km <sup>2</sup> over 1 century
17.00 - 17.15	<b>ID 130 Swati Sahasrabudhe:</b> Merging landscapes scales: A journey through pedagogical approaches in Landscape Architecture Studios
17.15 - 17.30	<b>ID 12 Andrea Oldani:</b> Abjuring Scales
17.30 - 17.45	<b>ID 181 Jorg Sieweke:</b> The generalist becomes the specialist of the Anthropocene!
17.45 - 18.00	Discussion

## TRACK 5: Beyond the field (room D-1)

14.00 - 14.15	<b>Introduction by Tijana Dabović:</b> Beyond the field seen by a learning spatial planning theorist, geodesigner and a tourist in the human behaviour disciplines
14.15 - 14.30	<b>ID 150 Tim Waterman:</b> Planetarity: Landscapes of Double Consciousness
14.30 - 14.45	<b>ID 29 Chrili Car:</b> Scales of West African Dimensions
14.45 - 15.00	<b>ID 122 Ines Prehn:</b> En Route: a new understanding of being physically and virtually on the move
15.00 - 15.15	<b>ID 34 Inge Bobbink:</b> Courage to leave gaps in landscape architecture education
15.15 - 15.30	<b>ID 82 Ranja Hautamäki &amp; Tiina Merikoski:</b> Transdisciplinary knowledge production: From ideal to driving force
15.30 - 15.45	Discussion
15.45 - 16.15	Coffee break
16.15 - 16.30	<b>ID 27 Michiel Bakx:</b> A spatial quality framework to discuss design interventions for agricultural landscapes
16.30 - 16.45	<b>ID 133 Amalia Engström:</b> Recreational landscapes in the compact city: a challenge for landscape planning
16.45 - 17.00	<b>ID 156 Abel Crawford, Elisabeth Sjødahl &amp; Karin Helms:</b> NATURACT, a multi-disciplinary research project examining anticipatory projects through nature-based solutions in risk landscapes.
17.00 - 17.15	<b>ID 135 Nadezhda Kerimova:</b> An eye-tracking study of the effect of green zones and car ownership on the attractiveness of the shared courtyards.
17.15 - 17.30	<b>ID 138 Anaïs Leger-Smith:</b> The bird-friendly city: Interdisciplinary design research examining residential landscape typo-morphologies favorable to housing avifauna in the city of Toulouse, France.
17.30 - 17.45	Discussion

## TRACK 5: Beyond the field (ONLINE session 2)

11.15 - 11.30	<b>ID 171 Ekin Seker Kaya:</b> Participations of Different Disciplines- Examining the Development Process of Landscape Architecture through Academic Publications
11.30 - 11.45	<b>ID 161 Josephine Norrbo:</b> What is considered as high aesthetic value of landscape architecture and how is it believed to be achieved? Architect Sweden's Landscape Architecture Awards - a critical examination
11.45 - 12.00	<b>ID 26 Elizabeth Stapleton:</b> MicroLandscapes: Lessons in multi-scalar green infrastructure design from the discipline of microbial ecology
12.00 - 12.15	<b>ID 32 Efrat Hildesheim:</b> On the <i>Borderoadscape</i> and the <i>Landscape Syncope</i> : Conceptualization, Scale and Interdisciplinarity
12.15 - 12.30	<b>ID 185 Maria Pina Usai:</b> DECODING COASTAL PARADOX. The trans-disciplinary approach as a research method for an ever-changing landscape
12.30 - 12.45	Discussion
13.00 - 14.00	Lunch break
14.00 - 14.15	<b>ID 157 Zita Szabó:</b> Defining energy transition in landscape architecture
14.15 - 14.30	<b>ID 119 Funda Bas Bütüner:</b> (E)Merging Scales: On Landscape in Architectural Education
14.30 - 14.45	<b>ID 90 Emir Hasanagić:</b> Transdisciplinarity in landscape architecture profession and education in Bosnia and Herzegovina
14.45 - 15.00	<b>ID 201 Gabriëlle Bartelse:</b> Future proof teaching: lifelong learning in the Mixed Classroom
15.00 - 15.15	<b>ID 63 Werner Rolf:</b> Transformation pathways towards sustainable urban development by the inclusion of peri-urban farmland in green infrastructure strategies
15.15 - 15.30	<b>ID 31 Rosalea Monacella:</b> Power  Energy: The Thickened Ground of Labour
15.30 - 15.45	Discussion
15.45 - 16.15	Coffee break
16.15 - 16.30	<b>ID 118 Divya Shah:</b> People Place Palimpsest
16.30 - 16.45	<b>ID 95 Mina Di Marino:</b> CLaD and Transdisciplinarity. Transdisciplinary challenges, research and education in Landscape democracy
16.45 - 17.00	<b>ID 105 Monica Manfredi:</b> The Biopark: a sequence of temporary landscapes active in a progressive decontamination of the soil
17.00 - 17.15	<b>ID 16 Saja Al-Rifaie:</b> Humanitarian Scale in Landscape Architecture
17.15 - 17.30	Discussion

## TRACK 1: Evolution and reflection (room Ž-2)

- 11.15 - 11.30 **ID 116 Amalia Engström:** Reassembling a welfare landscape: applying learnings from planning outdoor recreation in the 70s to today's Sweden
- 11.30 - 11.45 **ID 205 Vita Žlender:** Investigating the association between characteristics of green space and physical activity of young people in Slovenia
- 11.45 - 12.00 **ID 195 Cláudia Fernandes:** Assessing the Perceptions, Preferences, and Attitudes of Users of Urban Green Spaces
- 12.00 - 12.15 **ID 64 Patrícia Szabó:** Lost in translation - How do „noises“ in the landscape architectural communication of public green space projects affect the implementation of the principles of sustainability?
- 12.15 - 12.30 **ID 72 Koenraad Danneels:** Designing “a spectacular, green and social valley”: post-war urbanism, landscape expertise and civil resistance in Brussels (1965-1979)
- 12.30 - 12.45 Discussion
- 13.00 - 14.00 Lunch break

## TRACK 3: Teaching across scales (room Ž-3)

- 11.15 - 11.30 **ID 132 Elisabeth Sjö Dahl:** Interconnecting scales through the flows of water
- 11.30 - 11.45 **ID 207 Martin van den Toorn:** Teaching in landscape architecture; learning to design in the context of the dynamics of landscape form and process
- 11.45 - 12.00 **ID 42 Zydi Teqja:** Blue-Green Factor (BGF) as a tool for cross-scale Teaching Methods in Landscape Architecture
- 12.00 - 12.15 **ID 172 Matanya Sack:** “Land-Based”: Issue-based teaching of landscape territorial design, as a bridge between planning and design at multiple scales - the case of LandBasics “River-Sea” programme
- 12.15 - 12.30 Discussion
- 13.00 - 14.00 Lunch break

## TRACK 4: Context matters (room D-22)

- 11.15 - 11.30 **ID 83 Karin Helms:** The European Master in Landscape Architecture: Examining pedagogical approaches on European dimension in large-scale landscape design.
- 11.30 - 11.45 **ID 67 Richard Stiles:** Not just ‘green...’ and ‘blue...’, it is time to focus on: Invisible Infrastructure
- 11.45 - 12.00 **ID 142 Jeroen de Vries:** Connecting national and international scales of landscape architecture standards: a draft proposal for a common training framework
- 12.00 - 12.15 Discussion
- 13.00 - 14.00 Lunch break

## TRACK 1: Evolution and reflection (ONLINE session 1)

- 11.15 - 11.30 **ID 165 Fatma Bekar:** Revealing History for the Landscapes of Today and Future
- 11.30 - 11.45 **ID 103 Catarina Teixeira:** Novel solutions to Novel challenges: How can Landscape Architecture bridge gaps between science, people, and nature?
- 11.45 - 12.00 **ID 164 Märit Jansson:** The welfare landscape and densification – where do children play?
- 12.00 - 12.15 **ID 120 Joseph Adeniran Adedeji:** Centennial Landscape Architecture Education in Africa: Scale, Success, Setback
- 12.15 - 12.30 **ID 141 Nicolás Mariné:** Heritage Practices and Contemporary Landscapes: Reflections after 20 years of the European Landscape Convention
- 12.30 - 12.45 Discussion
- 13.00 - 14.00 Lunch break

## TRACK 2: Relation between design and planning (ONLINE session 2)

- 11.15 - 11.30 **ID 14 Bin Li:** A Landscape-informed Approach to Bridging Landscape Planning and Design
- 11.30 - 11.45 **ID 196 Hannah Hopewell:** What, where, how much and how: Landscape-led responses to housing in crisis
- 11.45 - 12.00 **ID 35 Firat Ali Firat:** A Location Evaluation Approach for New Green Bridges in Brisbane, Australia: Hybrid Decision Making with GIS and Space Syntax
- 12.00 - 12.15 **ID 50 Elif Ayan Çeveni:** Scale examination of the smellscape on where ? to how ?
- 12.15 - 12.30 **ID 148 Caroline Dahl:** Design as a driving force for planning uncertain futures
- 12.30 - 12.45 **ID 192: Haris Piplas:** Integrated solutions for reinventing fragmented urbanism? An experimental journey through contested urban laboratories
- 12.45 - 13.00 Discussion
- 13.00 - 14.00 Lunch break



## Poster session (main building)

- 09.45 - 11.15 **ID 4 Madara Markova, Natalija Nitavska:** Cooperation enhancing methods in process of large territory landscape planning by a group of students  
**ID 19 Karel Vandenhende:** Learning from Comparing Scales  
**ID 22 Estefania Mompean Botias:** Atlas of the Emergency. Approaching methodologies for a rapidly changing built environment  
**ID Dora Tomić Reljić, Lara Bogovac, Petra Pereković, Monika Kamenečki, Ines Hrdalo, Višnja Šteko:** Problems and Challenges of Valuing Cultural and Natural Heritage in Landscape Studies  
**ID 66 Monika Kamenečki, Petra Pereković, Aneta Mudronja Pletenac, Helena Miholić, Dora Tomić Reljić:** New perspectives for neglected urban ecosystems: A case study of green roof on a brownfield site of University hospital Blato  
**ID 94 Başak Akarsu, Gülşen Aytaç:** Transforming story of Water in Eastern Anatolia: From potential to threat  
**ID 125 Alexis Liu:** Unsettled edges under the urban revolution  
**ID 127 Marie-Laure Garnier:** From metabolism of soils to landscape architecture: a new way to conceive landscape design  
**ID 140 Kamila Adamczyk-Mucha, Lucyna Górski-Kłęk, Kamila Rojek:** Landscape architect as a necessary partner in multidisciplinary dialogue toward shaping the healing environment  
**ID 166 Jozef Sedlacek, Daniel Matějka, Petr Kučera, Radim Klepárník, Zuzana Fialová, Kristýna Kohoutková, Magdaléna Březinová, Veronika Chalupová:** How to communicate „Cultural Landscape“  
**ID 170 Frederico Meireles Rodrigues, Viviana Frutuoso, Ângela Silva:** Concentrating Landscape Value – Planning the Route of Douro Wine Region Recreational Estates  
**ID 184 Frederico Meireles Rodrigues, Maria Helena Moreira, Nádía Parreira:** A Multimethod Approach to Improving Walking Landscape Experience of the Green Urban Park  
**ID 189 Aline Hessel, Ana Medeiros, Cláudia Fernandes:** A systematic review on expert methodologies for landscape visual quality assessment  
**ID 194 Frederico Meireles Rodrigues, Ângela Silva, Sara Terroso, Carlos Ribeiro:** Strategy, Planning and Large-scale Design Challenges of a Linear River Greenway Trail  
**ID 199 Nevena Vasiljević, Bordis Radić, Anja Matić, Emilija Medojević, Suzan Gavrilović, Andreja Tutundžić, Momir Krč, Dragana Čorović, Nevenka Galečić, Sandra Mitrović, Dejana Pešikan, Sofija Mičić, Isidora Elčić:** The Atlas of Belgrade's Landscape Character Types: The New Interpretation of the Landscape Value  
**ID 200 Jess Bryne-Daniel:** 'Landscape': a small word encompassing a diverse scale of interpretation

## Poster session (ONLINE)

- 10.00 - 10.05 **ID 11 Sara Đorđević:** From grey to green squares. Fighting climate change  
10.05 - 10.10 **ID 84 Daixin Dai:** The Application Of Ecosystem-Based Disaster Risk Reduction For Urban High Temperature Disasters In China  
10.10 - 10.15 **ID 97 Anita Reith:** Designing school environments – changing approaches for the public open spaces around schools in the case of Hungary  
10.15 - 10.20 **ID 134 Zaneta Hong:** Material ecologies and the scales of entanglement  
10.20 - 10.25 **ID 153 Outi Tahvonon:** The intersection of landscape management and maintenance  
10.25 - 10.30 **ID 114 Adéla Chmelová:** How we forgot about residents in the residential areas  
10.30 - 10.35 **ID 197 Daniele Stefano:** Representing the complexity of Nature, from micro to macro scale  
10.35 - 10.40 **ID 160 Outi Tahvonon:** Teaching and learning experiences from the module of “Scalable processes in Built Environment”  
10.40 - 10.45 **ID 147 Wei Shi:** Building the connection between planning and design through multi-objective synergy: A heritage corridor study of Jingxiang ancient road, China  
10.45 - 11.00 Online breakout rooms networking

## DAY 4: Excursions

Wednesday, 14. September 2022

### Karst and Adriatic Coast

08:30 - 18:30 **Option 1: ŠKOCJANSKE JAME CAVES**

Škocjanske jame caves are the only monument in Slovenia and the Classical Karst region on UNESCO's list of natural and cultural world heritage sites. The exceptional volume of the underground canyon distinguishes the Škocjan Caves from other caves and places them among the most famous underground features in the world.



Photo: Borut Lozej

After option 1 and 2, the trip will continue to the Sečovlje Saltpans Natural Park, where the ancient method of manual salt-making is still practiced. According to the available written records, the Sečovlje salt-pans are more than 700 years old, and represents an exceptional cultural landscape with many indigenous and endangered plant and animal species. Our last stop of the day before returning to Ljubljana in the evening will be a local wine tasting in a traditional wine cellar.

### Ljubljana

11.00 - 13.00 **Option 3: LJUBLJANA CITY TOUR - group A**

13:00 - 15:00 **Option 4: LJUBLJANA CITY TOUR - group B**

A two hour tour of Ljubljana City. The tour will take delegates through the historical city centre, whose unique architecture is the legacy of the Baroque and Art Nouveau periods and, most notably, the work of the famous 20th-century architect Jože Plečnik; whose work is now listed on the UNESCO World Heritage list. From the city centre we will go to Ljubljana Castle which has sat on a hill overlooking the city for about 900 years. On this tour, delegates will learn about the city's and castle's history and enjoy the beautiful city views afforded from the castle's ramparts.

08:30 - 18:30 **Option 2: LIPICA STUD FARM**

Lipica Stud farm is the original stud farm of one of the oldest cultural horse breeds – the Lipizzan horse – and the oldest European stud farm breeding a single breed of horse. It is the only micro location offering optimum conditions for Lipizzan horse breeding at the highest level, and its individual elements (the layout, architectural core, and cultural landscape) were developed exclusively for the purpose of Lipizzan horses breeding.



Photo: Borut Lozej



Photo: Barbara Kostanjšek



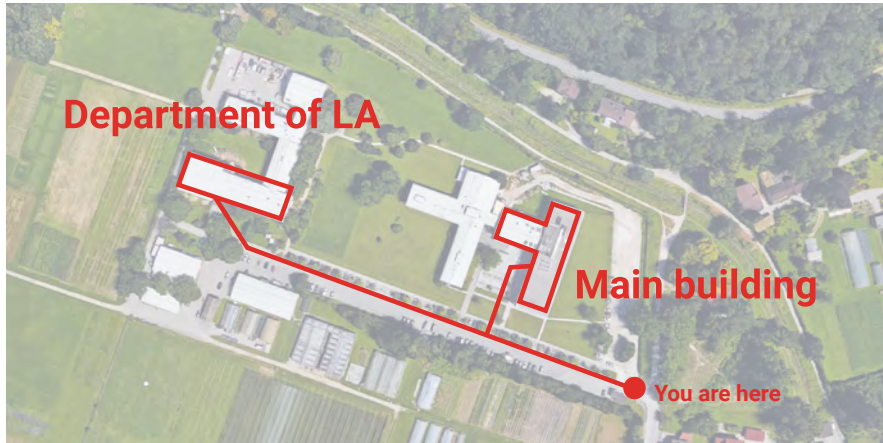
Photo: Barbara Kostanjšek



## Conference

University of Ljubljana, Biotechnical faculty - Conference  
[Jamnikarjeva 101, 1000 Ljubljana](#)

Conference will be held in the buildings, visible on the map of faculty campus.



**Main building** of the Biotechnical faculty (ground and 1st floor of the building):

- Registration, poster sessions, coffee & lunch breaks (entrance of the building)
- Track 1, LAE book launch (room Ž-2)
- Track 2 (room Ž-4)
- Track 3, NELA workshop, JoLA socializing (room Ž-3)
- Track 4, SPOOL journal seminar (room D-22)
- Track 5, welcome speeches, keynotes, round table, general assembly (room D-1)

**Department of Landscape Architecture** (on the 2nd floor of the building):

- Doctoral Colloquium, Head of Schools meeting (room KA-4)
- ExCo meeting (room P-2)
- Landscape Architecture students' exhibitions

Ljubljana Municipality, city town hall – Welcome event  
[Mestni trg 1, 1000 Ljubljana](#)

Hotel Lev – Gala dinner  
[Vošnjakova ulica 1, 1000 Ljubljana](#)

Tourism Information Centre – City excursion  
[Adamič-Lundrovo nabrežje 2, 1000 Ljubljana](#)

## Getting around in Ljubljana

You can arrive to the faculty by car (free parking available, the guard will let you in), taxi, bike or bus:

- > Bus line 14: exit Station Jamnikarjeva, 5 min walk
- > Bus line 18: exit Station Večna pot, 5 min walk
- > Bus line 6: exit Station Vič, 12 min walk

To use the bus or bike sharing system [BicikelJ](#) you need to get an [Urbana card](#).

Urbana costs 2 € and can be bought at an Urbanomat green ticket machine or in any Trafika/Kiosk/News stand. A weekly subscription for the bike system is 3 € and a single bus ride is 1.30 €. Closest BicikelJ bike sharing stations are Viško polje (800 m) and Živalski vrt (500 m).

If you will take a taxi you can use:

Taxi Metro (App or +386 41240200) or  
Cammeo (App or +386 17771212)

## What to see in Ljubljana

[National Gallery of Slovenia](#) – permanent Collection of Art in Slovenia from 1870 Onwards

[Museum & Galleries of Ljubljana](#) – various permanent and exhibitions at different locations

[International Centre of Graphic Arts](#) – various exhibitions

[Cankarjev dom](#) – various exhibitions

[Škuc Gallery](#) – various exhibitions

[Vodnikova domačija Šiška](#) – various exhibitions

[Plečnik house](#) – permanent collection and guided tours of the Slovenian famous architect

[Nebotičnik building](#) – cafe with a panoramic view of Ljubljana from city's first skyscraper

[Central city market](#) and [Žale cemetery](#) by architect Jože Plečnik

[Autonomous cultural centre Metelkova](#) – night life and various exhibitions

[Kino Šiška](#) – night life and various exhibitions

## Getting to the conference by bus

